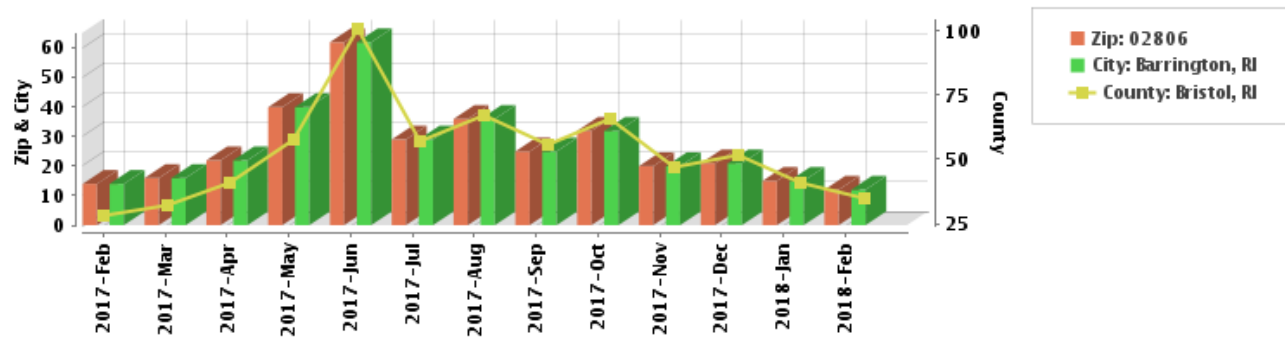


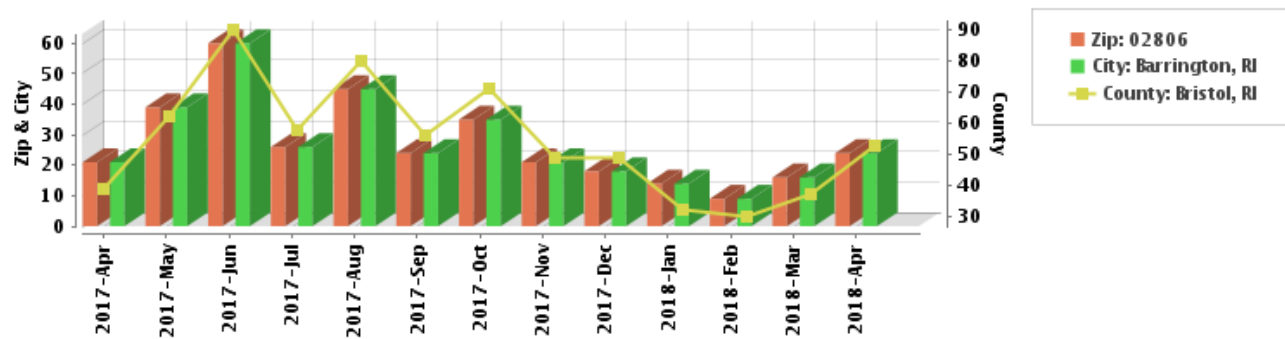
Market Activity

Number of Sales - Tax



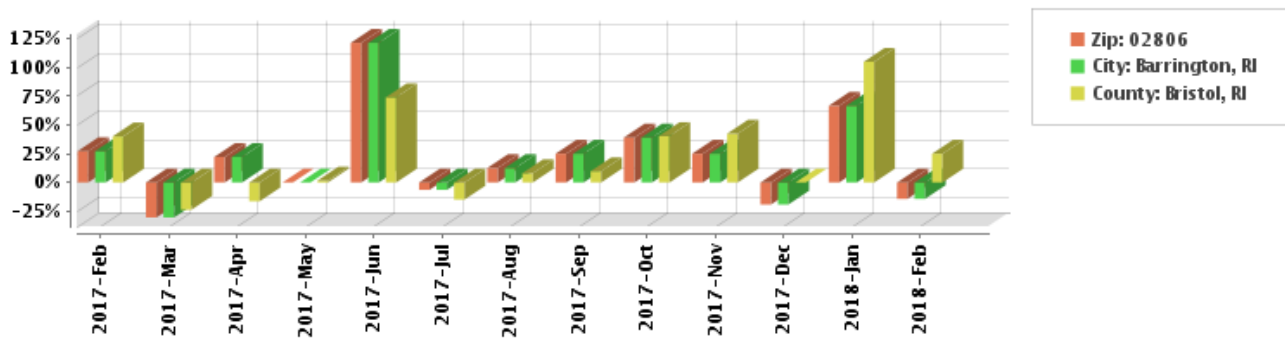
The number of properties sold via Tax. Increasing sales activity signifies an accelerating market, while decreasing activity signifies a declining market. Remember that sales activity may also change seasonally, so be sure to compare sales activity between comparable periods and over a sufficiently long enough timeline.

Number of Sales - MLS



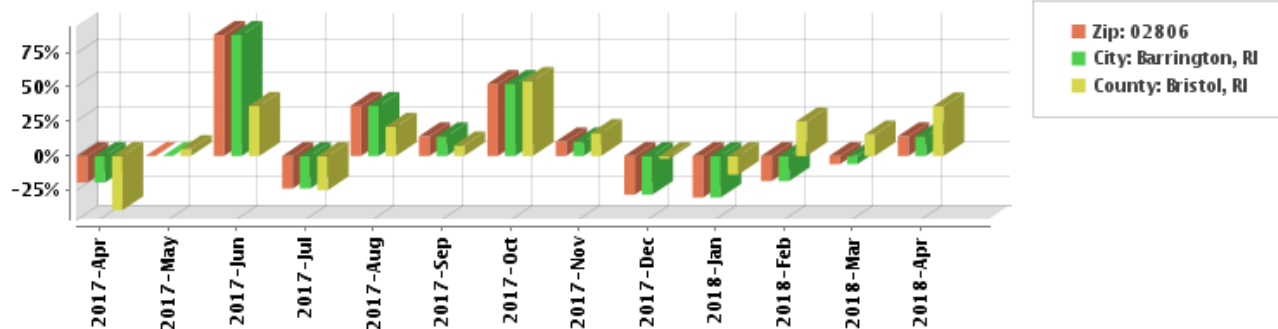
The number of properties sold via the MLS. Increasing sales activity signifies an accelerating market, while decreasing activity signifies a declining market. Remember that sales activity may also change seasonally, so be sure to compare sales activity between comparable periods and over a sufficiently long enough timeline.

Change in Sales Activity - Tax



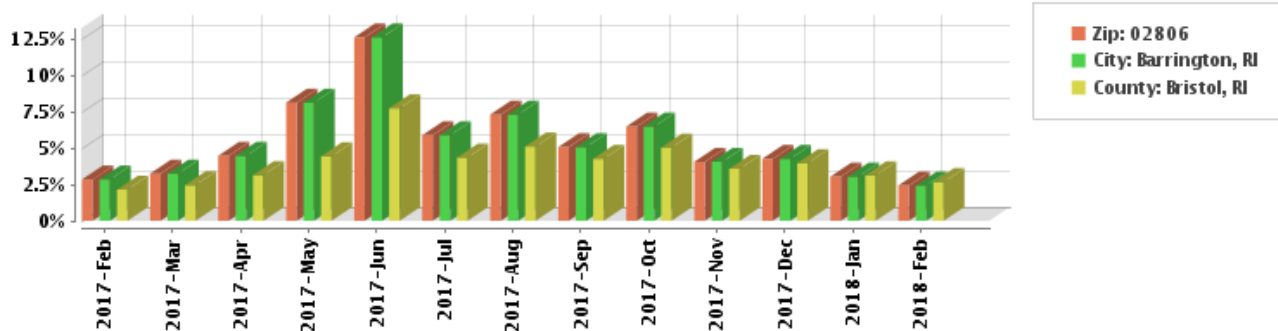
The percentage change in sales activity compared to the corresponding month or quarter of the prior year. Positive percentages reflect improving market conditions, and decreasing ones indicate declining market conditions.

Change in Sales Activity - MLS



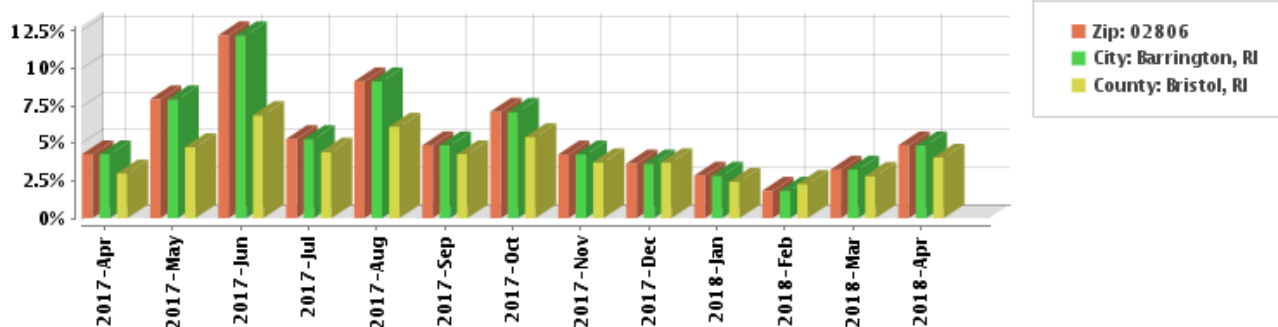
The percentage change in sales activity compared to the corresponding month or quarter of the prior year. Positive percentages reflect improving market conditions, and decreasing ones indicate declining market conditions.

Annual Turnover Rate - Tax



The annualized turnover rate indicates the percentage of all homes within the locale that sold via Tax. Comparing the annualized turnover rate between locations provides an indication of each area's relative stability or volatility.

Annual Turnover Rate - MLS



The annualized turnover rate indicates the percentage of all homes within the locale that sold via the MLS. Comparing the annualized turnover rate between locations provides an indication of each area's relative stability or volatility.

(1) Powered by RealEstate Business Intelligence. Information is deemed reliable but not guaranteed. Copyright © 2014 RealEstate Business Intelligence. All rights reserved.